



HORRIS HILL
SCHOOL

Horris Hill Preparatory School Upper School Uniform and Equipment List For Day Pupils

For any enquiries regarding uniform, please contact Jenny Wiesendanger on
jenny_wiesendanger@horrishill.com

School Uniform

All clothing, except footwear, is available from our official supplier:

Stevensons,
245 Banbury Road, Oxford, OX2 7HN
01865 554 559

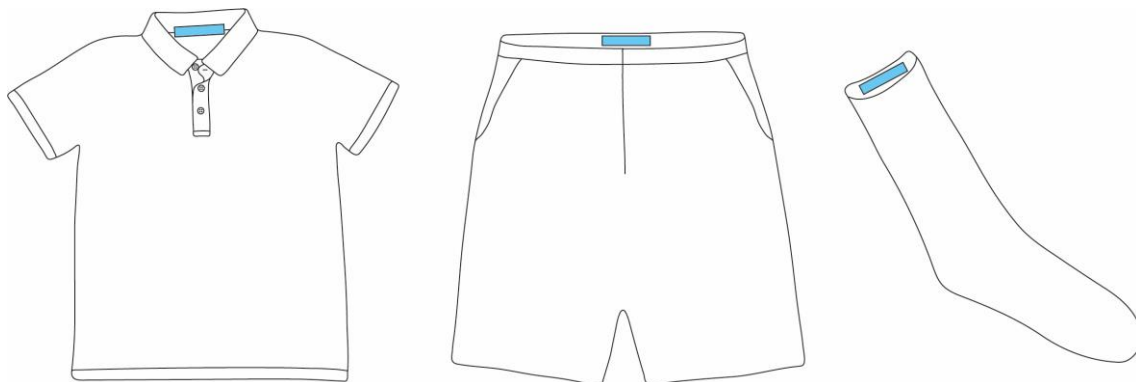
<http://www.stevensons.co.uk/School/HorrisHillNewbury/Browse>

Labelling

- Please name all clothing and swimming goggles with a sew-on label.
- Please ensure that additional belongings (pencil cases, watches, glasses etc.) are clearly labelled.

Position of labelling

- Jumpers, shirts etc.: labelled at the centre back of the neck (please also sew a label into the hood as well as the wax jacket).
- Trousers and shorts: marked at the centre back of the waist-band
- Socks: labelled on the ribbing at the top



When your son first arrives at school, please bring 2 large Bath Towels (130 x 70cm or 150 x 90 cm) for use in the changing room. These will be kept at school during the holidays.

For everyday wear

Please return to school wearing the following uniform:

- Autumn and Spring Term: Check shirt, tie, navy cord trousers or cord shorts, navy pullover, navy ankle socks, black shoes.
- Summer Term: Pale blue polo shirt, navy cotton shorts, navy pullover, navy ankle socks, brown deck shoes.

Upper School Years 4 - 8	
Every Term	
Navy V-necked Pullover	2
Navy V-necked Sleeveless Pullover	Optional 1
Pairs of Navy Ankle Socks	5
Navy or Dark Green Wax Jacket with Hood or Reversible Navy Jacket	1
Navy or Green Wellington Boots	1
Black Leather Shoes	1
Best Uniform for Chapel Services and Senior School Visits	
Tweed Sports Jacket or Navy Blazer	1
White Shirts	1
Ties of own choice	2
Grey Trousers	1
Pairs of Grey Ankle Socks	2

Autumn and Spring Terms Only	
Long Sleeved Check Shirts	2
Navy Blue Cord Trousers or Cord Shorts	2
Navy Scarf/Gloves	1

Summer Term Only	
Blue Polo Shirts	2
Navy Cotton Shorts	2
Brown Leather Deck Shoes ¹	1
White or Navy Cap	1

¹Brown leather deck shoes are available from Papouelli of London. Papouelli staff who are experienced in fitting shoes for children, visit the school in the spring term. You will be contacted early in the Spring Term to ask if you would like to book a fitting.

Academic equipment

- Please see Parent's Handbook for a list of items required for the classroom

Sport and PE

All clothing for sport and PE is provided, labelled and laundered by the school and is covered by an initial charge. Parents are asked to provide the following items.

Each term, please take the following items in a named medium sized sports bag to your son's changing room peg. Second sets of sports briefs and skins should be handed in for storage in the Main Locker Room. On your son's first term as a boarder, please bring 2 large Bath Towels (130 x 70cm or 150 x 90 cm) for use in the changing room

Every Term		
	Year 4	Years 5 - 8
White Non-marking Gym Shoes	1	1
Astro Trainers	1	1
White Sports Briefs	2	2
Black or Navy Knee Length Swimming Shorts	1	1
Swimming Goggles	1	1
Comb	1	1
Autumn and Spring Terms Only		
	Year 4	Years 5 - 8
Football Boots ²	1	1
Black Baselayer Top	2	2
Body Armour for Rugby (Optional)	1	1
Gum Shield ³	1	1
Shin Pads with ankle supports	1	1
Summer Term Only		
	Year 4	Years 5 - 8
Cricket Box	1	1
White Baselayer Top	2	2
Cricket Shoes or Boots	-	1

Summer Term Only		
	Year 4	Years 5 - 8
Cricket Bat https://seriouscricket.co.uk	1	1
Cricket Helmet	-	1
Cricket bag	-	1
Batting Gloves	-	1
Batting Pads	-	1

²Football boots with British kite mark safety studs or moulded studs.

³School fitting of 'Opro' gum shields will take place in October. Please email paul_hayes@horrishill.com for more details.